



## Installation of the Strain Relief Device on Rectangular and Square Vent Frames

**NOTE: THESE INSTRUCTIONS ARE FOR B.D.I. STRAIN RELIEF DEVICES BEING USED WITH VENT FRAMES**

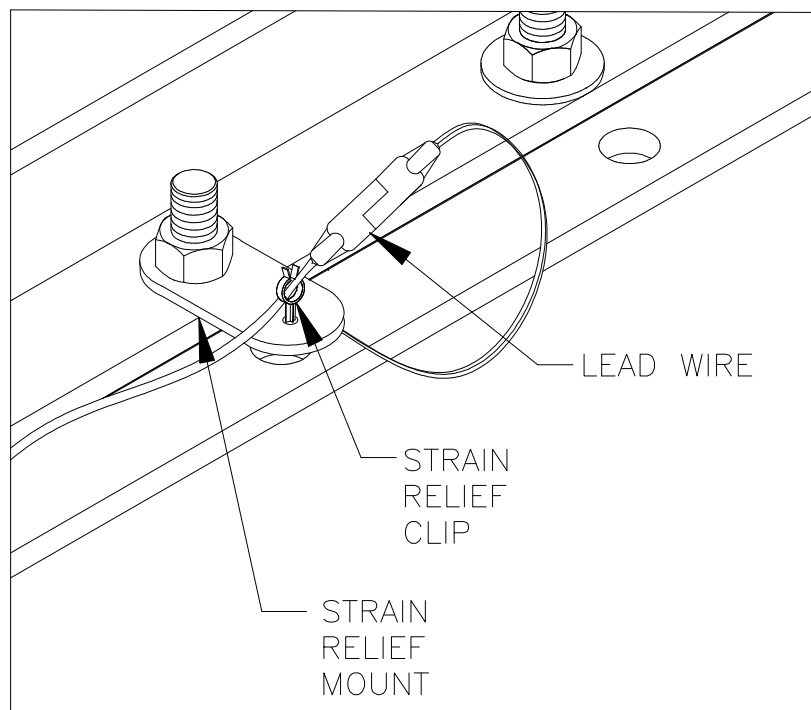
### Installation (See Figure A)

1. Remove one nut and washer from a stud securing the vent frame outlet to the vent frame inlet near where the Burst Disc Indicator (B.D.I.<sup>®</sup>) exits.
2. Place the strain relief mount over the exposed stud and reinstall the washer and nut. Make certain the strain relief mount is perpendicular to the side of the vent frame. Torque the nut per the requirements which are given in the installation instruction supplied with the vent panel.
3. Insert the strain relief clip into the exposed hole in the strain relief mount.
4. Allowing sufficient slack for easy connection to the B.D.I., secure the lead wire to the strain relief device by fastening the twist lock on the clip.
5. Plug the B.D.I. connector into the leadwire connector using a slight twisting action.

### Customer Service

If you wish to discuss your application, installation, or maintenance, please contact the customer Service Department at one of the addresses shown on the last page of these instructions.

FIGURE 'A'





**Continental Disc<sup>®</sup>  
Corporation**

*Performance Under Pressure<sup>®</sup>*



First Certified in 1992



If stamped, this product is built in accordance with the requirements of the ASME Boiler and Pressure Vessel Code, Section VIII, Division 1.

**China Manufacture License**  
Products are in full compliance with the provisions of the Peoples Republic of China Import Regulations for Boiler and Pressure Vessel safety devices.



**3A Sanitary Standards Stamp**  
If stamped, this product is in full compliance with the 3A standards, Serial #60-00, of the International Association of Milk, Food, and Environmental Sanitarians, Inc.



**European Union CE Mark**  
If stamped, this product is certified to conform to the essential requirements of the Pressure Equipment Directive.

Continental Disc Corporation has representatives located throughout the world.  
Contact the office nearest you for the authorized representative in your area.

 	<p><b>HEADQUARTERS //</b> 3160 W. Heartland Drive Liberty, MO 64068 USA Ph (816) 792 1500   Fax (816) 792 2277 sales@contdisc.com</p>	<p><b>contdisc.com</b></p>
<p><b>THE NETHERLANDS</b> Energieweg 20 2382 NJ Zoeterwoude-Rijndijk The Netherlands Ph +{31} 71 5412221   Fax +{31} 71 5414361 cdcnl@contdisc.com</p>	<p><b>CHINA</b> Room 910, Tower B, COFCO Plaza No. 8 JianGuoMenNei Avenue Beijing (100005), P.R. China Ph +(86) 10 522 4885   Fax +(86) 10 6522 2885 cdcchina@contdisc.com</p>	<p><b>INDIA</b> 423/P/11, Mahagujarat Industrial Estate, Moraiya, Sarkhej-Bavla Road, Ahmedabad (G.J) 382213 INDIA Ph +(91) 2717 619 333   Fax +(86) 10 6522 2885 gcmpl@contdisc.com</p>

Continental Disc Corporation reserves the right to alter the information in this publication without notice.

Reproduction without written permission prohibited.

©1989, 2010, 2012 Continental Disc Corporation

Printed in U. S. A.