



**Continental Disc[®]
Corporation**

J-Hook Installation Guide for ASME, DIN, and JIS Insert Holders

NOTE: THIS GUIDE IS FOR INSERT HOLDERS MATING WITH STANDARD RAISED FACE COMPANION FLANGES.

I. Purpose

The J-Hook is provided in the holder inlet to ensure correct installation of the assembly relative to flow direction. The corresponding inlet companion flange must be drilled to accommodate the J-Hook prior to installation of the assembly.

II. Procedure

NOTE: For HPX-PT and HPX-PT-RH holders only: Align the machined stud notches in the holders with the flange studs, to position the J-Hook drilling template.

1. Select the correct color J-Hook drilling template (if more than one was provided with the holder) per **Table 1**. Position the correct color J-Hook drilling template on the inlet companion flange between bolt holes as shown in **Figure A**.

NOTE: Table 1 indicates the template color and 'X' dimension based on size and bolting class.

2. Make certain the hole in the template is facing the outside diameter of the companion flange.

NOTE: When installing the rupture disc assembly downstream of an elbow, the J-Hook drilling should be placed such that the J-Hook is parallel to the short radius of the elbow (See **Figure B**).

3. With the template held in this position, place a center punch in the hole in the template and strike the punch with enough force to mark the location.

Note: The hole in the template is located the same distance down as dimension 'X' in Table 1. This dimension is based on the use of a 1/8"/[3 mm] thick gasket between the holder inlet and the companion flange. If a thinner gasket is used, add the difference between the gasket thicknesses to dimension 'X'. If a thicker gasket is used, subtract the difference between the gasket thicknesses from dimension 'X'.

4. Drill a 3/8"/[10 mm] diameter hole 1/2"/[13 mm] deep in the companion flange.
5. The holder assembly can now be installed into the system.

III. Customer Service

If you wish to discuss your application, installation, or maintenance please contact the Customer Service Department at our headquarters location.

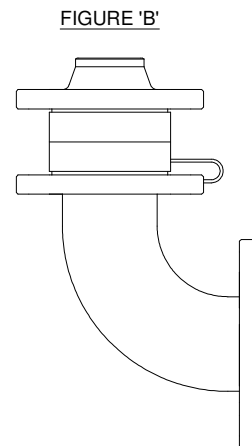
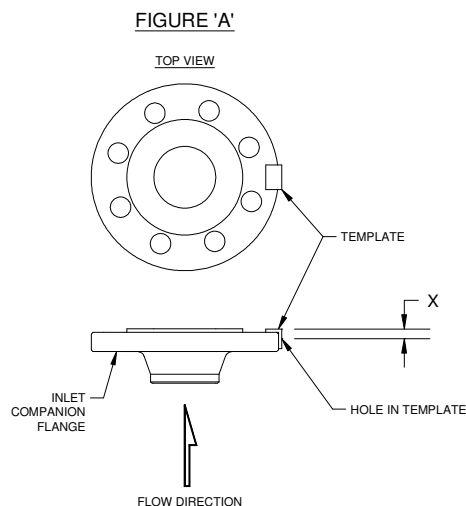


TABLE 1

SIZE		COMPANION FLANGES			X ± .03 / (0,8) (REF. FIGURE A)		TEMPLATE
IN.	MM	ASME	DIN	JIS	IN.	MM	COLOR
1	25	150	10/16	---	.25	6,5	PURPLE
1	25	---	---	10/16/20	.25	6,5	PURPLE
1	25	300	---	---	.38	9,5	YELLOW
1	25	---	25/40	---	.31	8,0	RED
1	25	600	---	---	.25	6,5	PURPLE
1	25	---	---	30/40	.31	8,0	RED
1	25	900/1500	---	---	.38	9,5	YELLOW
1	25	---	63/160	---	.31	8,0	RED
1	25	---	250	---	.31	8,0	RED
1	25	2500	---	---	.38	9,5	YELLOW
1½	40	150	10/16	10/16/20	.31	8,0	RED
1½	40	300	---	---	.50	13,0	GRAY
1½	40	600	25/40	30/40	.31	8,0	RED
1½	40	900/1500	---	---	.38	9,5	YELLOW
1½	40	---	63/160	---	.31	8,0	RED
1½	40	---	250	---	.31	8,0	RED
1½	40	2500	---	---	.38	9,5	YELLOW
2	50	150	10/16	10/16/20	.31	8,0	RED
2	50	300	---	---	.50	13,0	GRAY
2	50	600	25/40	30/40	.31	8,0	RED
2	50	---	63	---	.31	8,0	RED
2	50	900/1500	---	---	.38	9,5	YELLOW
2	50	---	100/160	---	.50	13,0	GRAY
2	50	---	250	---	.50	13,0	GRAY
2	50	2500	---	---	.38	9,5	YELLOW
3	80	150	---	---	.56	14,0	ORANGE
3	80	---	10	10	.31	8,0	RED
3	80	---	16	---	.31	8,0	RED
3	80	---	---	16/20	.31	8,0	RED
3	80	300	---	---	.56	14,0	ORANGE
3	80	---	25/40	---	.31	8,0	RED
3	80	600	---	---	.38	9,5	YELLOW
3	80	---	63	30/40	.31	8,0	RED
3	80	900	---	---	.38	9,5	YELLOW
3	80	---	100/160	---	.50	13,0	GRAY
3	80	1500	---	---	.38	9,5	YELLOW
3	80	---	250	---	.50	13,0	GRAY
3	80	2500	---	---	.38	9,5	YELLOW

TABLE 1

SIZE		COMPANION FLANGES			X ± .03 / (0,8) (REF. FIGURE A)		TEMPLATE
IN.	MM	ASME	DIN	JIS	IN.	MM	COLOR
4	100	150	---	---	.56	14,0	ORANGE
4	100	---	10/16	10	.31	8,0	RED
4	100	---	---	16/20	.31	8,0	RED
4	100	300	---	---	.56	14,0	ORANGE
4	100	---	25/40	---	.31	8,0	RED
4	100	---	---	30	.50	13,0	GRAY
4	100	600	---	---	.38	9,5	YELLOW
4	100	---	63	40	.50	13,0	GRAY
4	100	900	---	---	.38	9,5	YELLOW
4	100	---	100/160	---	.50	13,0	GRAY
4	100	1500	---	---	.38	9,5	YELLOW
4	100	---	250	---	.50	13,0	GRAY
4	100	2500	---	---	.38	9,5	YELLOW
6	150	150	---	---	.56	14,0	ORANGE
6	150	---	10/16	10	.31	8,0	RED
6	150	---	---	16/20	.50	13,0	GRAY
6	150	300	---	---	.56	14,0	ORANGE
6	150	---	25/40	30	.50	13,0	GRAY
6	150	600	---	---	.38	9,5	YELLOW
6	150	--	63	40	.50	13,0	GRAY
6	150	900	---	---	.38	9,5	YELLOW
6	150	---	100/160	---	.50	13,0	GRAY
6	150	---	250	---	.50	13,0	GRAY
6	150	1500	---	---	.38	9,5	YELLOW
6	150	2500	---	---	.38	9,5	YELLOW
8	200	150	---	---	.56	14,0	ORANGE
8	200	---	10	10	.31	8,0	RED
8	200	---	16	---	.31	8,0	RED
8	200	---	---	16/20	.50	13,0	GRAY
8	200	300	---	---	.56	14,0	ORANGE
8	200	---	25	30	.50	13,0	GRAY
8	200	---	40	40	.50	13,0	GRAY
8	200	600	---	---	.38	9,5	YELLOW
8	200	---	63	---	.50	13,0	GRAY
8	200	---	100/160	---	.50	13,0	GRAY
8	200	900	---	---	.38	9,5	YELLOW
8	200	1500	---	---	.38	9,5	YELLOW
8	200	2500	---	---	.38	9,5	YELLOW

TABLE 1

SIZE		COMPANION FLANGES			X ± .03 / (0,8) (REF. FIGURE A)		TEMPLATE
IN.	MM	ASME	DIN	JIS	IN.	MM	COLOR
10	250	150	---	---	.56	14,0	ORANGE
10	250	---	10	10	.31	8,0	RED
10	250	---	16	---	.31	8,0	RED
10	250	---	---	16/20	.50	13,0	GRAY
10	250	300	---	---	.56	14,0	ORANGE
10	250	---	25	30	.50	13,0	GRAY
10	250	---	40	40	.50	13,0	GRAY
10	250	600	---	---	.38	9,5	YELLOW
10	250	---	63	---	.50	13,0	GRAY
10	250	---	100	---	.50	13,0	GRAY
12	300	150	---	---	.56	14,0	ORANGE
12	300	---	10	10	.50	13,0	GRAY
12	300	---	16	16/20	.50	13,0	GRAY
12	300	300	---	---	.56	14,0	ORANGE
12	300	---	25	30	.50	13,0	GRAY
12	300	600	---	---	.38	9,5	YELLOW
12	300	---	40	40	.50	13,0	GRAY



**Continental Disc®
Corporation**

Performance Under Pressure®

HEADQUARTERS //
3160 W. Heartland Drive
Liberty, MO 64068 USA
Ph (816) 792-1500
Fax (816) 792-2277
sales@contdisc.com
contdisc.com