

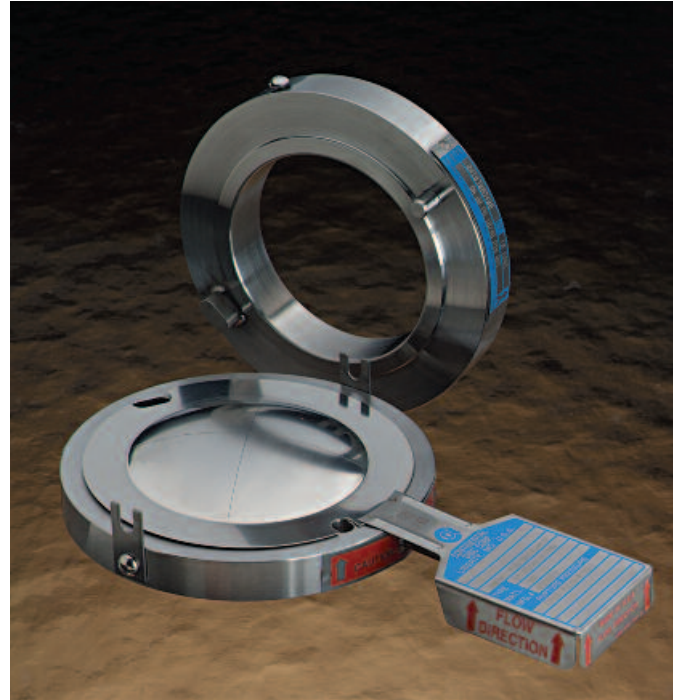
# RHI

## Flat Seat Holder Assembly

2-3309

### Introducing Continental Disc Corporation's newest addition to its full range of rupture disc holders:

The RHI Holder is a flat seat rupture disc holder which provides improved rupture disc sealing capabilities. The minimal overall height of the RHI Holder allows installation in tight piping arrangements, and retrofit into many existing installations.



### RHI Flat Seat Holder Features include:

- Available in standard sizes from 1" through 8" (25mm - 200mm)
- Available in standard pressure classes from 150# through 600# ANSI (PN 10/16 - PN 40 DIN)
- Standard materials of 316 Stainless Steel, Carbon Steel, Monel<sup>®\*</sup>, and Hastelloy C<sup>®\*\*</sup>
- Alignment pins, which provide positive rupture disc orientation
- J-Hook, as standard, to insure positive holder orientation in the system
- Tapered flat seat design, for a positive seal
- Designed to accommodate MICRO X<sup>®</sup> and Composite (FS) rupture discs
- Holder can accommodate a 1/4" gauge tap in the outlet. Larger taps are optional with an increase in outlet height
- Tested performance; the RHI design has been extensively tested in our ASME-Accepted Flow Test Laboratory, and proven not to leak
- Design allows retrofit into many existing installations, without concern for assembly height

### One Holder—But Variable Rupture Disc Design Options

The RHI Holder is available in a wide range of sizes and materials, and is designed to house either the MICRO X Rupture Disc (shown above) or the Composite Flat Seat Rupture Disc. These non-fragmenting designed rupture discs provide a wide choice of burst ratings, from the low pressures of the Composite Rupture Disc through the higher pressures of the scored MICRO X Rupture Disc.



**Continental Disc<sup>®</sup>  
Corporation**

*Performance Under Pressure<sup>®</sup>*

\* Monel is a registered trademark of the Inco family of companies.

\*\* Hastelloy is a registered trademark of Haynes International.

# DIMENSIONS AND WEIGHTS

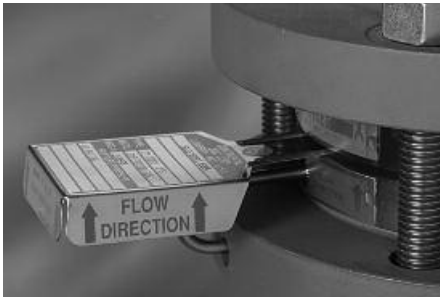
Table 1 — RHI Flat Seat Holder Dimensions and Weights

Rupture Disc Nominal Size	ANSI		DIN		Height inch / mm	Weight lb / kg
	Class	Outside Diameter (inch / mm)	Class	Outside Diameter (mm)		
1" 25 mm	150	2.50 / 635			150 / 38	1.5 / 0,7
	300 / 600	2.75 / 69,9	10 / 40	6,9	1.50 / 38	1.9 / 0,9
1-1/2" 40 mm	150	3.25 / 82,6			1.50 / 38	2.4 / 1,1
	300 / 600	3.63 / 92,2	10 / 40	92,2	1.50 / 38	3.3 / 1,5
2" 50 mm	150	3.25 / 82,6			1.50 / 38	2.4 / 1,1
	300 / 600	4.25 / 108,0	10 / 40	108,0	1.50 / 38	4.0 / 1,8
3" 80 mm	150	5.25 / 133,4			1.50 / 38	5.1 / 2,3
			10 / 40		1.50 / 38	7.0 / 3,2
	300 / 600	5.75 / 146,1			1.50 / 38	7.0 / 3,2
4" 100 mm			10 / 16	162,0	1.50 / 38	6.8 / 3,1
			25 / 40	168,0	1.50 / 38	7.8 / 3,5
	150	6.75 / 171,5			1.50 / 38	8.4 / 3,8
	300	7.00 / 177,8			1.50 / 38	9.6 / 4,4
	600	7.50 / 190,5			1.50 / 38	12 / 5,4
6" 150 mm			10 / 16	217,0	2.00 / 51	14 / 6,4
	150	8.63 / 219,2			2.00 / 51	14 / 6,4
			25 / 40	223,0	2.00 / 51	15 / 6,8
	300	9.75 / 247,7			2.00 / 51	24 / 11
	600	10.38 / 263,7			2.00 / 51	29 / 13
					2.00 / 51	38 / 17
8" 200 mm			10 / 16	272,0	2.25 / 57	21 / 9,5
	150	10.88 / 276,4			2.25 / 57	23 / 10
			25	283,0	2.25 / 57	26 / 12
			40	290,0	2.25 / 57	29 / 13
	300	12.00 / 304,8			2.25 / 57	36 / 16
	600	12.50 / 317,5			2.25 / 57	42 / 19
					2.25 / 57	62 / 28
					2.25 / 57	59 / 27

## J-Hook and Alignment Pins

The RHI Holder offers two alignment pins in the holder outlet, which help assure correct rupture disc orientation into the holder. The holder is also equipped with a J-Hook for proper indexing and flow orientation between the companion flanges. Both the J-Hook and alignment pins are provided on all RHI Holders.

## Tagging



The RHI Holder is supplied with a permanently attached stainless steel nameplate with arrows that indicate flow direction. In addition, the Composite and MICRO X rupture discs are supplied with a three-dimensional flow direction tag. Directional arrows on both the tag and nameplate provide a means to visually verify the rupture disc assembly is properly oriented in your system.



A customer's pertinent identification information (specified at time of order) will be stamped on the rupture disc tags and holder tags.

## Application Flexibility

In the event that there is a change in system operating requirements, the flexibility of the RHI Assembly permits utilization of various rupture disc types in order to meet a wide range of burst pressures. The Composite Flat Seat Rupture Disc may be selected for handling very low burst pressures (down to 3 psig / 0,20 barg, depending on size), and the MICRO X Rupture Disc can be utilized for higher pressures (up to 3600 psig / 248,28 barg, depending on size). Thus, the type of rupture disc can be changed, rather than replacing the existing holder.

To determine minimum / maximum burst ratings for MICRO X or Composite (FS) rupture discs, refer to UNISERT® Assembly bulletin no. 2-2203-2.

## Ordering Information

To facilitate manufacturing and shipping of your RHI Rupture Disc Assembly, the following information should be supplied when ordering:

### HOLDER SPECIFICATIONS

- Quantity \_\_\_\_\_ • Size \_\_\_\_\_
- Bolting class (ANSI, DIN)
- Material (inlet, outlet)
- Options: gasket facing, gauge tap, coatings
- Accessories: nipple/tee, excess flow valve, pressure gauge, studs and nuts, eyebolts, jackscrews

### RUPTURE DISC SPECIFICATIONS

- Quantity \_\_\_\_\_ • Size \_\_\_\_\_
- Type \_\_\_\_\_
- Options: linings, coatings, rings, gaskets, vacuum support
- Materials \_\_\_\_\_
- Specified pressure \_\_\_\_\_
- Specified temperature \_\_\_\_\_
- Manufacturing range: Standard, 1/2, 3/4 or min/max
- Previous manufacturing number (if known) \_\_\_\_\_

### QUALITY ASSURANCE / DOCUMENTATION

- ASME Code tests (UD) Code Stamp per Section VIII) \_\_\_\_\_
- Special cleaning \_\_\_\_\_
- Special packaging \_\_\_\_\_
- Special tagging \_\_\_\_\_
- Temperature testing \_\_\_\_\_
- Material test reports \_\_\_\_\_
- Other \_\_\_\_\_

### OPERATING SPECIFICATIONS

- Maximum allowable working pressure (vessel M.A.W.P.) \_\_\_\_\_
- Operating pressure \_\_\_\_\_
- Operating temperature \_\_\_\_\_
- Vacuum / backpressure \_\_\_\_\_
- Cycle conditions \_\_\_\_\_
- Flow rate required \_\_\_\_\_
- Media \_\_\_\_\_
- Molecular weight/specific gravity \_\_\_\_\_
- Use under relief valves \_\_\_\_\_

*For more specific information regarding applicable rupture discs and B.D.I. Alarm System, consult your Continental Disc representative or the factory.*

## B.D.I.®\* Alarm System

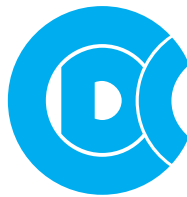
In situations where it is important for immediate notification of pressure relief, Continental's B.D.I. (Burst Disc Indicator) Alarm System can be used. Compatible with the MICRO X and Composite Flat Seat rupture discs, the Universal B.D.I. Alarm is composed of copper conductors adhered to a TEFLON®\*\* membrane and assembled between non-asbestos gaskets. As the rupture disc bursts, the alarm strip is severed, triggering an electrical signal which translates into audio and/or visual warning signals actuated through an



alarm monitor. The Continental Disc B.D.I. Alarm Monitor is available with Factory Mutual approval, intrinsically safe outputs, and computer compatibility.

For more information about the Continental Disc B.D.I. Alarm System, refer to bulletin no. 5-7701-5.

\*\* TEFLON is a registered trademark of the DuPont® Corporation.



# Continental Disc<sup>®</sup> Corporation

*Performance Under Pressure<sup>®</sup>*



ASME Code Symbol Stamp  
Available When Specified

China Manufacture License  
Available When Specified



Pressure Equipment Directive  
Available When Specified

Continental Disc Corporation has representatives located throughout the world.  
Contact the C.D.C. office nearest you for the authorized representative in your area.

#### CORPORATE HEADQUARTERS

Continental Disc Corporation  
3160 W. Heartland Drive  
Liberty, MO 64068-3385 USA

Phone: (816) 792-1500  
FAX: (816) 792-2277 / 5447  
E-mail: [pressure@contdisc.com](mailto:pressure@contdisc.com)  
Website: [www.contdisc.com](http://www.contdisc.com)

#### THE NETHERLANDS

Continental Disc Corporation  
Energieweg 20  
2382 NJ Zoeterwoude-Rijndijk  
The Netherlands

Phone: + (31) 71-5412221  
FAX: + (31) 71-5414361  
E-mail: [cdcnl@contdisc.com](mailto:cdcnl@contdisc.com)

#### CHINA

Continental Disc Corporation  
Room 910, Tower B, COFCO Plaza  
No. 8 JianGuoMenNei Avenue  
Beijing (100005), P.R. China

Phone: + (86) 10-6522-4885  
Fax: + (86) 10-6522-2885  
Mobile: + (86) 137-0103-8871  
E-mail: [cdcchina@contdisc.com](mailto:cdcchina@contdisc.com)

#### INDIA

Groth Continental Mfg. Pvt. Ltd.  
Survey No. 423/P, Mahagujarat  
Industrial Estate, Moraiya, Sarkhej-  
Bavla Road, Ahmedabad 382213,  
INDIA

E-mail: [gcmpl@contdisc.com](mailto:gcmpl@contdisc.com)