

**Continental Disc®  
Corporation**

## Preparation and Installation of the (CFR) and (CFS) Formed Composite Rectangular and Square Vent Panels

### WARNING

USER SHOULD READ AND THOROUGHLY UNDERSTAND THESE INSTRUCTIONS BEFORE INSTALLING VENT PANEL. THESE INSTRUCTIONS DO NOT PURPORT TO ADDRESS ALL OF THE SAFETY FACTORS ASSOCIATED WITH THE VENT PANEL'S USE IN SERVICE. IT IS THE RESPONSIBILITY OF THE USER TO ESTABLISH APPROPRIATE SAFETY, HEALTH, AND TRAINING MEASURES FOR THEIR PERSONNEL INSTALLING, SERVICING, OR WORKING IN AN AREA WHERE VENT PANEL ASSEMBLIES ARE IN USE. SERVICE AND/OR MAINTENANCE ON OR AROUND THE VENT PANEL DEVICE MUST NOT BE PERFORMED WHILE THE DEVICE IS SUBJECTED TO OPERATING PRESSURES AND/OR TEMPERATURES.

IT IS THE USER'S SOLE RESPONSIBILITY FOR DESIGN AND PLACEMENT OF VENT PANELS WITHIN THEIR FACILITY AND UPON THE EQUIPMENT UPON WHICH THE VENT PANEL OF USER'S SELECTION IS TO BE LOCATED. IT IS USER'S SOLE RESPONSIBILITY FOR THE DESIGN OF ADEQUATE VENTING AND INSTALLATION OF ADEQUATE VENT PIPING OR DIRECTIONAL FLOW AFTER RUPTURE OCCURS WITH THE VENT PANEL AS INTENDED. WHEN SIZE IS SPECIFIED, CONTINENTAL DISC CORPORATION ASSUMES THAT ADEQUATE PROVISIONS HAVE BEEN MADE BY PURCHASER FOR PROPER VENTING OF A SYSTEM TO RELIEVE THE SPECIFIC PRESSURE. LOCATE VENT PANEL WHERE PEOPLE OR PROPERTY WILL NOT BE EXPOSED TO THE SYSTEM DISCHARGE IN CASE OF RUPTURE. VENT TOXIC OR FLAMMABLE FUMES OR LIQUIDS TO A SAFE LOCATION TO PREVENT PERSONAL INJURY OR PROPERTY DAMAGE.

IT IS THE USER'S SOLE RESPONSIBILITY TO SPECIFY THE BURST PRESSURE RATING OF A VENT PANEL AT A COINCIDENT TEMPERATURE AT WHICH THE VENT PANEL IS TO BE USED. A VENT PANEL IS A TEMPERATURE SENSITIVE DEVICE. THE BURST PRESSURE OF THE VENT PANEL IS DIRECTLY AFFECTED BY ITS EXPOSURE TO THE COINCIDENT TEMPERATURE. GENERALLY, AS THE TEMPERATURE AT THE VENT PANEL INCREASES, THE BURST PRESSURE DECREASES; INVERSELY, AS THE TEMPERATURE AT THE VENT PANEL DECREASES, THE BURST PRESSURE MAY INCREASE. FAILURE TO PROPERLY UTILIZE A VENT PANEL AT THE SPECIFIED COINCIDENT TEMPERATURE COULD CAUSE PREMATURE FAILURE OR OVERPRESSURIZATION OF A SYSTEM.

THE INSTANTANEOUS RELEASE OF PRESSURE FROM THE VENT PANEL CAN CREATE VIOLENT NOISES DUE TO THE DISCHARGE AT SONIC VELOCITY. IT IS THE USER'S SOLE RESPONSIBILITY TO PROTECT AGAINST HEARING DAMAGE TO ANY BYSTANDERS.

VENT PANELS AND TAGS ARE MADE OF METAL FOILS OF VARYING THICKNESS. THE METAL EDGES MAY BE SHARP. PERSONNEL INSTALLING OR EXAMINING THE VENT PANELS SHOULD PROTECT AGAINST CUTS OR INJURY WHEN HANDLING THE VENT PANEL. DO NOT LIFT A VENT PANEL BY ITS ATTACHED TAG.

PARTICLES MAY BE DISCHARGED WHEN THE VENT PANEL RUPTURES. THESE PARTICLES MAY BE PART OF THE VENT PANEL ITSELF, OR OTHER ENVIRONMENTAL MATTER IN THE SYSTEM. IT IS THE USER'S SOLE RESPONSIBILITY TO ASSURE THAT THESE PARTICLES ARE DIRECTED TO A SAFE AREA TO PREVENT PERSONAL INJURY OR PROPERTY DAMAGE.

THERE IS NO GUARANTEE OF VENT PANEL LIFE. SUCH LIFE SPAN IS AFFECTED BY CORROSION, CREEP AND FATIGUE, AND PHYSICAL DAMAGE. THESE CONDITIONS WILL DERATE THE VENT PANEL TO A LOWER SET PRESSURE. THE CUSTOMER AND/OR USER SHOULD BE PREPARED TO HANDLE PREMATURE FAILURE OF THE VENT PANEL. THE MEDIA OR OTHER ENVIRONMENTAL CONDITIONS SHOULD NOT ALLOW ANY BUILDUP OR SOLIDIFICATION OF MEDIA TO OCCUR ON A VENT PANEL. THIS MAY INCREASE THE PRESSURE SETTING OF THE VENT PANEL.

CUSTOMER AND/OR ITS INSTALLER SHALL BE SOLELY RESPONSIBLE FOR THE PROPER INSTALLATION OF SELLER'S HOLDERS AND VENT PANELS INTO A SYSTEM. CUSTOMER AND/OR ITS INSTALLER SHALL BE SOLELY RESPONSIBLE FOR IMPROPER INSTALLATION AND PHYSICAL DAMAGE RESULTING THEREFROM, INCLUDING BUT NOT LIMITED TO, DAMAGE RESULTING FROM LEAKAGE, IMPROPER TORQUING OR SEATING OF A VENT PANEL OR FAILURE TO FOLLOW INSTALLATION INSTRUCTIONS WHERE PROVIDED.

VENT PANELS ARE PRECISION SAFETY DEVICES AND MUST BE INSTALLED PROPERLY. VENT PANELS MUST BE INSTALLED BY TRAINED, KNOWLEDGEABLE INSTALLERS AND ONLY WITHIN ENVIRONMENTS SUITABLE AND APPROPRIATE FOR A VENT PANEL. CARE MUST BE USED IN A FACILITY'S DESIGN TO PROTECT BOTH THE VENT PANEL FROM INADVERTENT DAMAGE WHICH COULD CAUSE ITS PREMATURE RELEASE AND TO PROTECT INDIVIDUALS EXPOSED TO HAZARDS CREATED BY SUCH SUDDEN RELEASE.

PROPER INSTALLATION OF A VENT PANEL IS CRITICAL TO PERFORMANCE AND TO SAFETY. FAILURE TO PROVIDE PROPER SEATING OF A VENT PANEL MAY AFFECT VENT PANEL PERFORMANCE, BURST PRESSURE ACCURACY AND MAY RESULT IN ITS PREMATURE FAILURE.

## I. Safety Precautions Before Installation

1. The Vent Panel is a precision instrument and must be handled with extreme care. Vent panels should be installed only by qualified personnel familiar with vent panel practices.
2. Do not install the vent panel if there is any evidence of damage. A damaged vent panel is any panel with visible nicks or dents in the dome.
3. The vent panel must be installed with the labeled side facing the venting direction.
4. Continental Disc Corporation does not recommend reinstalling a vent panel that has been removed from the holder as reinstallation may adversely affect the joint sealing capabilities and/or performance of the vent panel.

## II. Preparation of Vent Frames for Installation

### New Installation

Clean all foreign material from the vent panel sealing area of both the inlet and outlet frames.

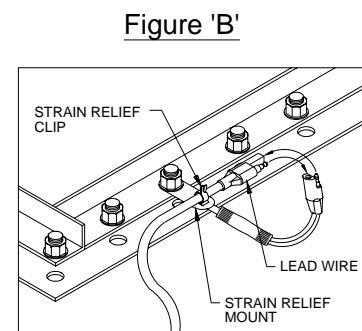
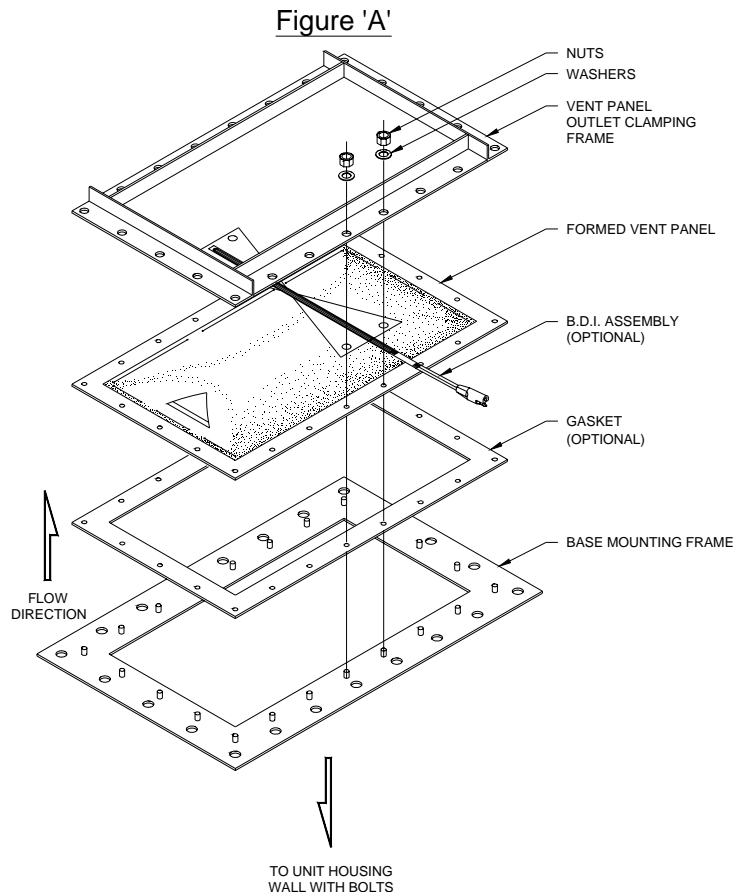
### Replacement Installation

1. If the Burst Disc Indicator (B.D.I.<sup>®</sup>) Alarm System is used, disconnect the alarm strip from the monitor by unplugging the B.D.I. connector from the lead wire connector.
2. Disassemble the vent frame by removing all assembly bolts, nuts and washers. Lift the outlet frame and set aside; then remove the burst vent panel.
3. Clean the vent panel sealing area of both the inlet and outlet frames. These surfaces must be completely clean and free of all rust, corrosion, and foreign material to ensure a proper seal. Use of solvents, steel wool, or fine emery cloth is permissible. Do not re-machine. Do not use scraper or abrasives.
4. Inspect the vent panel sealing area for nicks, scratches, or pitting. If any of these conditions are present, consult the factory for repair.
5. Remove any adhered gasket material from previous installation.

## III. Assembly of the Vent Panel and Frame (See Figure A)

Component parts of the vent panel assembly are illustrated in the proper installation sequence.

1. Place all vent panel components over the studs provided in the inlet frame.
2. If the B.D.I. Alarm System is used, visually inspect the adhesion of the strip to the Teflon<sup>®</sup> seal and the electrical circuit. If the strip has become detached or the circuit has been broken, **DO NOT INSTALL THE VENT PANEL**. Ensure that the B.D.I. strip extends straight and flat.
3. Align and lower the outlet frame onto the vent panel.
4. If the B.D.I. Alarm System is used, installation of the strain relief device is necessary (see Figure B). Place the strain relief mount over a stud near where the B.D.I. exits and secure with a washer and nut. Hand tighten only at this time. Insert the strain relief clip into the hole in the strain relief mount. Allowing sufficient slack for easy connection to the B.D.I. connector, secure the lead wire to the strain relief device by fastening the twist lock on the clip. Plug the B.D.I. connector into the leadwire connector using a slight twisting action.



5. Install all remaining nuts and washers. Torque all nuts with a calibrated torque wrench to 25 Ft•Lbs / (34 N•m).

\*Teflon is a registered trademark of E.I. du Pont de Nemours and Company used under license.

#### IV. Preventative Maintenance

1. Periodic visual inspection should be made to assure vent panel installation is free from structural damage and vent area is free of obstruction.
2. Risk assessment and an annual vent panel replacement are recommended. Vent panel service life is determined by system operating conditions. The effects of severe pressure/vacuum cycles, corrosion, temperature variations, or other adverse conditions must be evaluated by the user through actual service experience to determine optimal service life.
3. **IF THE VENT PANEL IS NOT REPLACED PERIODICALLY WHEN EXPOSED TO THESE CONDITIONS, PREMATURE FAILURE OF THE VENT PANEL MAY OCCUR.**
4. To avoid extended downtime, maintain two spare vent panels in stock at all times for each vent frame in use. The number of spares required ultimately will be determined by service conditions.

#### V. Customer Service

If you wish to discuss your application, installation, or maintenance, please contact the Customer Service Department at one of the addresses shown on the last page of these instructions.

Vent Panels incorporate U.S. Patent No.'s 4,498,261 and 4,612,739.


Burst Disc Indicator (B.D.I.) Alarm System incorporates U.S. patent no. Re. 34,308 and 4,408,194; Australia patent no. 539415; Germany patent no. 3174227.0; Belgium, France and United Kingdom patent no. EP 0 033 867; Canada patent no. 1199990; Japan patent no. 2032464.

##### B.D.I. ALARM SYSTEM OPERATING LIMITS

TEMPERATURE: -40° F to + 400° F  
(-40° C to + 204° C)

MAX CURRENT: 50 Milli Amps  
MAX VOLTAGE: 24 VDC RMS

BURST DISC INDICATOR (B.D.I.®): Sizes 25mm through 900mm (1 inch through 36 inches)

Marked:  II 2 G D EEx ia IIC  
(Tamb = -40° C to +204° C)

EC Type Examination Certificate: IISO3ATEX 21357U

FULFILL THE REQUIREMENTS OF DIRECTIVE 94/9 EC (ATEX) FOR: COMPONENTS of equipment and protective systems intended for use in potentially explosive atmospheres.

APPLIED HARMONIZED STANDARD: EN 50 014: 1997 + Amds 1 & 2 General Requirements  
EN 50 020: 2002, Intrinsic Safety

ADDITIONAL INFORMATION: Conformity assessment performed by Notified Body no. 0359,  
ITS Testing and Certification Limited, Leatherhead, Surry, UK.



**Continental Disc  
Corporation**

*Performance Under Pressure®*



**Certified Quality System**  
First Certified In 1992



**ASME Code Symbol Stamp**  
If stamped, this product is built in accordance with the requirements of the ASME Boiler and Pressure Vessel Code, Section VIII, Division 1.

**China Manufacture License**  
Products are in full compliance with the provisions of the People's Republic of China Import Regulations for Boiler and Pressure Vessel safety devices.



**3A Sanitary Standards Stamp**  
If stamped, this product is in full compliance with the 3A standards, Serial #60-00, of the International Association of Milk, Food, and Environmental Sanitarians, Inc.



**European Union CE Mark Type Approval Stamp**  
If stamped, this product is certified to conform to the essential requirements of the Pressure Equipment Directive.

Continental Disc Corporation has representatives located throughout the world.  
Contact the C.D.C. office nearest you for the authorized representative in your area.

### CORPORATE HEADQUARTERS

#### Continental Disc Corporation

3160 W. Heartland Drive  
Liberty, Missouri 64068-3385 USA  
Phone: (816) 792-1500  
FAX: (816) 792-2277 / 5447  
E-mail: [pressure@contdisc.com](mailto:pressure@contdisc.com)  
Website: [www.contdisc.com](http://www.contdisc.com)

#### THE NETHERLANDS

Continental Disc Corporation  
Energieweg 20  
2382 NJ Zoeterwoude-Rijndijk  
The Netherlands  
Phone: +(31) 71-541 2221  
FAX: +(31) 71-541 4361  
E-mail: [cdcnl@contdisc.com](mailto:cdcnl@contdisc.com)

#### UNITED KINGDOM

Continental Disc UK Ltd.  
Unit C, The Business Centre  
Faringdon Avenue, Harold Hill  
Romford, Essex RM3 8EN  
United Kingdom  
Phone: +(44) 1708-386444  
FAX: +(44) 1708-386486  
E-mail: [cduk@contdisc.com](mailto:cduk@contdisc.com)

#### CHINA

Continental Disc Corporation  
Room 910, Tower B, COFCO Plaza  
No. 8 JianGuoMenNei Avenue  
Beijing (100005)  
P. R. China  
Mobile: +(86) 137 0 103 8871  
E-mail: [cdcchina@contdisc.com](mailto:cdcchina@contdisc.com)

#### DUBAI

Continental Disc Corporation  
P. O. Box 2234  
Dubai, U.A.E.  
Phone: +(971) 4321 4490  
Fax: +(971) 434 388 40  
Mobile: +(971) 508 1295 25  
E-mail: [kannan@contdisc.com](mailto:kannan@contdisc.com)