



**Continental Disc[®]
Corporation**

J-Hook Installation Guide for ANSI, DIN, and JIS Insert Holders

NOTE: THIS GUIDE IS FOR INSERT HOLDERS MATING WITH STANDARD RAISED FACE COMPANION FLANGES.

I. Purpose

The J-Hook is provided in the holder inlet to ensure correct installation of the assembly relative to flow direction. The corresponding inlet companion flange must be drilled to accommodate the J-Hook prior to installation of the assembly.

II. Procedure

1. Select the correct color J-Hook drilling template (if more than one was provided with the holder) per Table 1. Position the correct color J-Hook drilling template on the inlet companion flange between bolt holes as shown in Figure A.

NOTE: Table 1 indicates the template color and 'X' dimension based on size and bolting class.

2. Make certain the hole in the template is facing the outside diameter of the companion flange.

NOTE: When installing the rupture disc assembly downstream of an elbow, the J-Hook drilling should be placed such that the J-Hook is parallel to the short radius of the elbow (See Figure B).

3. With the template held in this position, place a center punch in the hole in the template and strike the punch with enough force to mark the location.

Note: The hole in the template is located the same distance down as dimension 'X' in Table 1. This dimension is based on the use of a 1/8"/[3 mm] thick gasket between the holder inlet and the companion flange. If a thinner gasket is used, add the difference between the gasket thicknesses to dimension 'X'. If a thicker gasket is used, subtract the difference between the gasket thicknesses from dimension 'X'.

4. Drill a 3/8"/[10 mm] diameter hole 1/2"/[13 mm] deep in the companion flange.
5. The holder assembly can now be installed into the system.

III. Customer Service

If you wish to discuss your application, installation, or maintenance please contact the Customer Service Department at one of the addresses shown on the last page of these instructions.

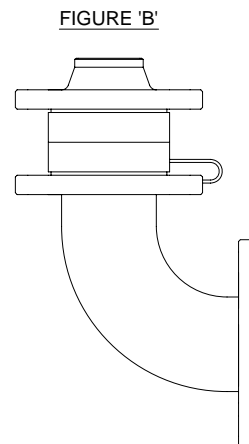
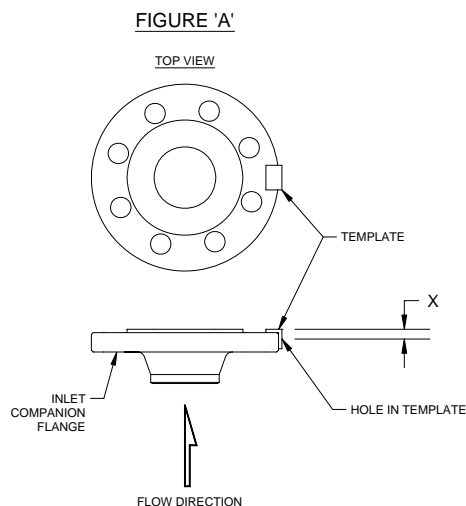


TABLE 1

| SIZE | | COMPANION FLANGES | | | X ± .03 / (0,8) (REF. FIGURE A) | | TEMPLATE |
|------|----|-------------------|---------|----------|------------------------------------|------|----------|
| IN. | MM | ANSI | DIN | JIS | IN. | MM | COLOR |
| 1 | 25 | 150 | 10/16 | --- | .25 | 6,5 | PURPLE |
| 1 | 25 | --- | --- | 10/16/20 | .25 | 6,5 | PURPLE |
| 1 | 25 | 300 | --- | --- | .38 | 9,5 | YELLOW |
| 1 | 25 | --- | 25/40 | --- | .31 | 8,0 | RED |
| 1 | 25 | 600 | --- | --- | .25 | 6,5 | PURPLE |
| 1 | 25 | --- | --- | 30/40 | .31 | 8,0 | RED |
| 1 | 25 | 900/1500 | --- | --- | .38 | 9,5 | YELLOW |
| 1 | 25 | --- | 64/160 | --- | .31 | 8,0 | RED |
| 1 | 25 | --- | 250 | --- | .31 | 8,0 | RED |
| 1 | 25 | 2500 | --- | --- | .38 | 9,5 | YELLOW |
| | | | | | | | |
| 1½ | 40 | 150 | 10/16 | 10/16/20 | .31 | 8,0 | RED |
| 1½ | 40 | 300 | --- | --- | .50 | 13,0 | GRAY |
| 1½ | 40 | 600 | 25/40 | 30/40 | .31 | 8,0 | RED |
| 1½ | 40 | 900/1500 | --- | --- | .38 | 9,5 | YELLOW |
| 1½ | 40 | --- | 64/160 | --- | .31 | 8,0 | RED |
| 1½ | 40 | --- | 250 | --- | .31 | 8,0 | RED |
| 1½ | 40 | 2500 | --- | --- | .38 | 9,5 | YELLOW |
| | | | | | | | |
| 2 | 50 | 150 | 10/16 | 10/16/20 | .31 | 8,0 | RED |
| 2 | 50 | 300 | --- | --- | .50 | 13,0 | GRAY |
| 2 | 50 | 600 | 25/40 | 30/40 | .31 | 8,0 | RED |
| 2 | 50 | --- | 64 | --- | .31 | 8,0 | RED |
| 2 | 50 | 900/1500 | --- | --- | .38 | 9,5 | YELLOW |
| 2 | 50 | --- | 100/160 | --- | .50 | 13,0 | GRAY |
| 2 | 50 | --- | 250 | --- | .50 | 13,0 | GRAY |
| 2 | 50 | 2500 | --- | --- | .38 | 9,5 | YELLOW |
| | | | | | | | |
| 3 | 80 | 150 | --- | --- | .56 | 14,0 | ORANGE |
| 3 | 80 | --- | 10 | 10 | .31 | 8,0 | RED |
| 3 | 80 | --- | 16 | --- | .31 | 8,0 | RED |
| 3 | 80 | --- | --- | 16/20 | .31 | 8,0 | RED |
| 3 | 80 | 300 | --- | --- | .56 | 14,0 | ORANGE |
| 3 | 80 | --- | 25/40 | --- | .31 | 8,0 | RED |
| 3 | 80 | 600 | --- | --- | .38 | 9,5 | YELLOW |
| 3 | 80 | --- | 64 | 30/40 | .31 | 8,0 | RED |
| 3 | 80 | 900 | --- | --- | .38 | 9,5 | YELLOW |
| 3 | 80 | --- | 100/160 | --- | .50 | 13,0 | GRAY |
| 3 | 80 | 1500 | --- | --- | .38 | 9,5 | YELLOW |
| 3 | 80 | --- | 250 | --- | .50 | 13,0 | GRAY |
| 3 | 80 | 2500 | --- | --- | .38 | 9,5 | YELLOW |

TABLE 1

| SIZE | | COMPANION FLANGES | | | X ± .03 / (0,8) (REF. FIGURE A) | | TEMPLATE |
|------|-----|-------------------|---------|-------|------------------------------------|------|----------|
| IN. | MM | ANSI | DIN | JIS | IN. | MM | COLOR |
| 4 | 100 | 150 | --- | --- | .56 | 14,0 | ORANGE |
| 4 | 100 | --- | 10/16 | 10 | .31 | 8,0 | RED |
| 4 | 100 | --- | --- | 16/20 | .31 | 8,0 | RED |
| 4 | 100 | 300 | --- | --- | .56 | 14,0 | ORANGE |
| 4 | 100 | --- | 25/40 | --- | .31 | 8,0 | RED |
| 4 | 100 | --- | --- | 30 | .50 | 13,0 | GRAY |
| 4 | 100 | 600 | --- | --- | .38 | 9,5 | YELLOW |
| 4 | 100 | --- | 64 | 40 | .50 | 13,0 | GRAY |
| 4 | 100 | 900 | --- | --- | .38 | 9,5 | YELLOW |
| 4 | 100 | --- | 100/160 | --- | .50 | 13,0 | GRAY |
| 4 | 100 | 1500 | --- | --- | .38 | 9,5 | YELLOW |
| 4 | 100 | --- | 250 | --- | .50 | 13,0 | GRAY |
| 4 | 100 | 2500 | --- | --- | .38 | 9,5 | YELLOW |
| | | | | | | | |
| 6 | 150 | 150 | --- | --- | .56 | 14,0 | ORANGE |
| 6 | 150 | --- | 10/16 | 10 | .31 | 8,0 | RED |
| 6 | 150 | --- | --- | 16/20 | .50 | 13,0 | GRAY |
| 6 | 150 | 300 | --- | --- | .56 | 14,0 | ORANGE |
| 6 | 150 | --- | 25/40 | 30 | .50 | 13,0 | GRAY |
| 6 | 150 | 600 | --- | --- | .38 | 9,5 | YELLOW |
| 6 | 150 | -- | 64 | 40 | .50 | 13,0 | GRAY |
| 6 | 150 | 900 | --- | --- | .38 | 9,5 | YELLOW |
| 6 | 150 | --- | 100/160 | --- | .50 | 13,0 | GRAY |
| 6 | 150 | --- | 250 | --- | .50 | 13,0 | GRAY |
| 6 | 150 | 1500 | --- | --- | .38 | 9,5 | YELLOW |
| 6 | 150 | 2500 | --- | --- | .38 | 9,5 | YELLOW |
| | | | | | | | |
| 8 | 200 | 150 | --- | --- | .56 | 14,0 | ORANGE |
| 8 | 200 | --- | 10 | 10 | .31 | 8,0 | RED |
| 8 | 200 | --- | 16 | --- | .31 | 8,0 | RED |
| 8 | 200 | --- | --- | 16/20 | .50 | 13,0 | GRAY |
| 8 | 200 | 300 | --- | --- | .56 | 14,0 | ORANGE |
| 8 | 200 | --- | 25 | 30 | .50 | 13,0 | GRAY |
| 8 | 200 | --- | 40 | 40 | .50 | 13,0 | GRAY |
| 8 | 200 | 600 | --- | --- | .38 | 9,5 | YELLOW |
| 8 | 200 | --- | 64 | --- | .50 | 13,0 | GRAY |
| 8 | 200 | --- | 100/160 | --- | .50 | 13,0 | GRAY |
| 8 | 200 | 900 | --- | --- | .38 | 9,5 | YELLOW |
| 8 | 200 | 1500 | --- | --- | .38 | 9,5 | YELLOW |
| 8 | 200 | 2500 | --- | --- | .38 | 9,5 | YELLOW |

TABLE 1

| SIZE | | COMPANION FLANGES | | | X ± .03 / (0,8) (REF. FIGURE A) | | TEMPLATE |
|------|-----|-------------------|-----|-------|------------------------------------|------|----------|
| IN. | MM | ANSI | DIN | JIS | IN. | MM | COLOR |
| 10 | 250 | 150 | --- | --- | .56 | 14,0 | ORANGE |
| 10 | 250 | --- | 10 | 10 | .31 | 8,0 | RED |
| 10 | 250 | --- | 16 | --- | .31 | 8,0 | RED |
| 10 | 250 | --- | --- | 16/20 | .50 | 13,0 | GRAY |
| 10 | 250 | 300 | --- | --- | .56 | 14,0 | ORANGE |
| 10 | 250 | --- | 25 | 30 | .50 | 13,0 | GRAY |
| 10 | 250 | --- | 40 | 40 | .50 | 13,0 | GRAY |
| 10 | 250 | 600 | --- | --- | .38 | 9,5 | YELLOW |
| 10 | 250 | --- | 64 | --- | .50 | 13,0 | GRAY |
| 10 | 250 | --- | 100 | --- | .50 | 13,0 | GRAY |
| 12 | 300 | 150 | --- | --- | .56 | 14,0 | ORANGE |
| 12 | 300 | --- | 10 | 10 | .50 | 13,0 | GRAY |
| 12 | 300 | --- | 16 | 16/20 | .50 | 13,0 | GRAY |
| 12 | 300 | 300 | --- | --- | .56 | 14,0 | ORANGE |
| 12 | 300 | --- | 25 | 30 | .50 | 13,0 | GRAY |
| 12 | 300 | 600 | --- | --- | .38 | 9,5 | YELLOW |
| 12 | 300 | --- | 40 | 40 | .50 | 13,0 | GRAY |



First Certified in 1992



ASME Code Symbol Stamp
If stamped, this product is built in accordance with the requirements of the ASME Boiler and Pressure Vessel Code, Section VIII, Division 1.

China Manufacture License
Products are in full compliance with the provisions of the Peoples Republic of China Import Regulations for Boiler and Pressure Vessels safety devices.



3A Sanitary Standards Stamp
If stamped, this product is in full compliance with the 3A standards, Serial #60-00, of the International Association of Milk, Food, and Environmental Sanitarians, Inc.



European Union CE Mark
If stamped, this product is certified to conform to the essential requirements of the Pressure Equipment Directive.

Continental Disc Corporation has representatives located throughout the world.
Contact the C.D.C. office nearest you for the authorized representative in your area.

CORPORATE HEADQUARTERS

Continental Disc Corporation

3160 W. Heartland Drive
Liberty, Missouri 64068-3385 USA
Phone: (816) 792-1500
FAX: (816) 792-2277 / 5447
E-mail: pressure@contdisc.com
Website: www.contdisc.com

THE NETHERLANDS

Continental Disc Corporation
Energieweg 20
2382 NJ Zoeterwoude-Rijndijk
The Netherlands
Phone: +(31) 71-5412221
FAX: +(31) 71-5414361
E-mail: cdcnl@contdisc.com

UNITED KINGDOM

Continental Disc UK Ltd.
Unit C, The Business Centre
Faringdon Avenue, Harold Hill
Romford, Essex RM3 8EN
United Kingdom
Phone: +(44) 1708-386444
FAX: +(44) 1708-386486
E-mail: cduk@contdisc.com

CHINA

Continental Disc Corporation
Room 910, Tower B, COFCO Plaza
No. 8 JianGuoMenNei Avenue
Beijing (100005)
P.R. China
Mobile: +(86) 137 0103 8871
E-mail: cdcchina@contdisc.com

DUBAI

Continental Disc Corporation
P. O. Box 2234
Dubai, U.A.E.
Phone: +(971) 43214490
Fax: +(971) 43438840
Mobile: +(971) 508129525
E-mail: cdcme@contdisc.com